



Министерство
инвестиций
и промышленности
Ярославской области

The land plot for the construction of production facilities is 8 hectares

General

Total area: 80000

Type of site: Greenfield

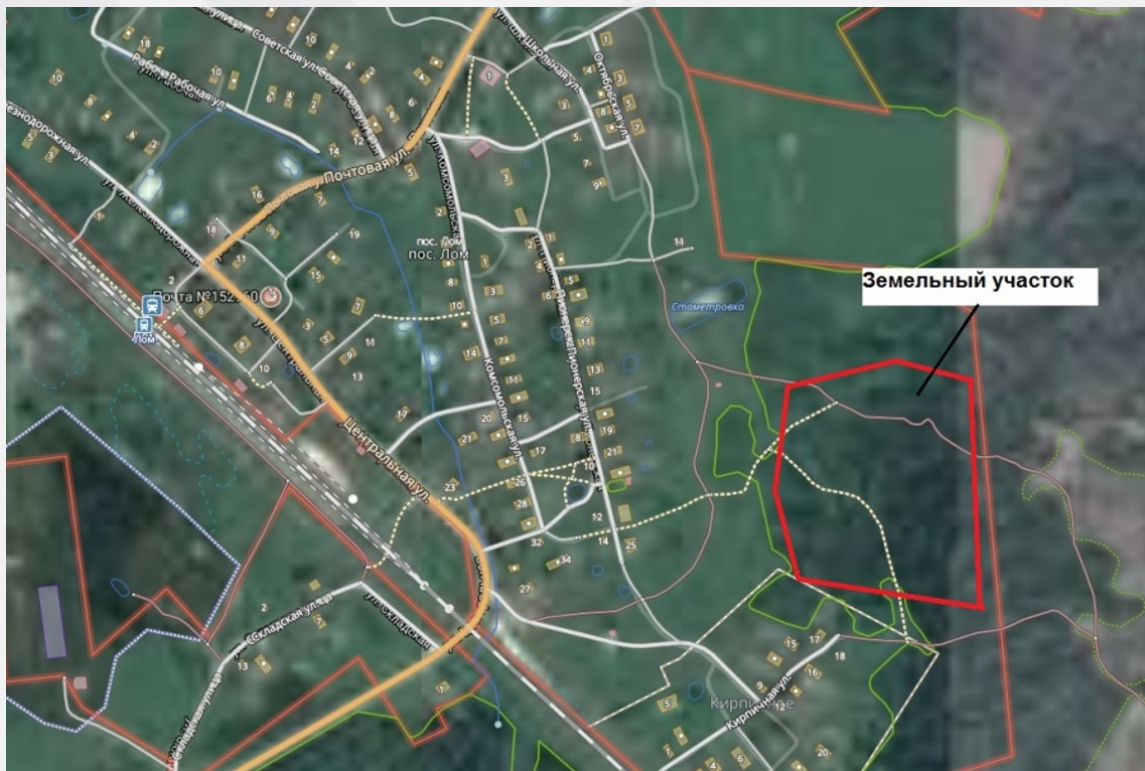
The format of the site: Land plot

Land category: Industrial lands

Municipal formation: Rybinsk district

Form of ownership: municipal

The form of the transaction: rent, sale



Infrastructure

Infrastructure: The distance from the administrative center is 27 km to the city of Rybinsk; the distance to the village Scrap 0.5 km; distance from the nearest freight railway station - 22 km; distance from a highway-type road 0.5 km; the possibility of arranging an exit is available; distance from the pier / river port 24 km; distance from the nearest fire station - 13 km. It is possible to connect. Power supply – centralized Water Supply – centralized Sewerage - local Gas Supply – no Heat supply - local

Drainage: It is possible to connect

Gas supply Availability: It is possible to connect

Electricity Availability: It is possible to connect

Heat supply Availability: It is possible to connect

Additional information

Support measures: [View](#)

Set of investment rules: [View](#)

Tariffs: [View](#)

Name of the owner: Administration of the Rybinsk municipal district

Administrator of the investment platform: Administration of the Rybinsk municipal district

Contact the facility administrator

Contact person

Stepina Victoria Vladimirovna, Deputy Head of the Revenue and Economic Development Department of the Department of Economics and Finance of the Administration of the Rybinsk Municipal District

Contact person's phone number, e-mail

+7 (4855) 22-26-24