



Министерство
инвестиций
и промышленности
Ярославской области

The land plot for the construction of production facilities is 26 hectares

General

Total area: 260000

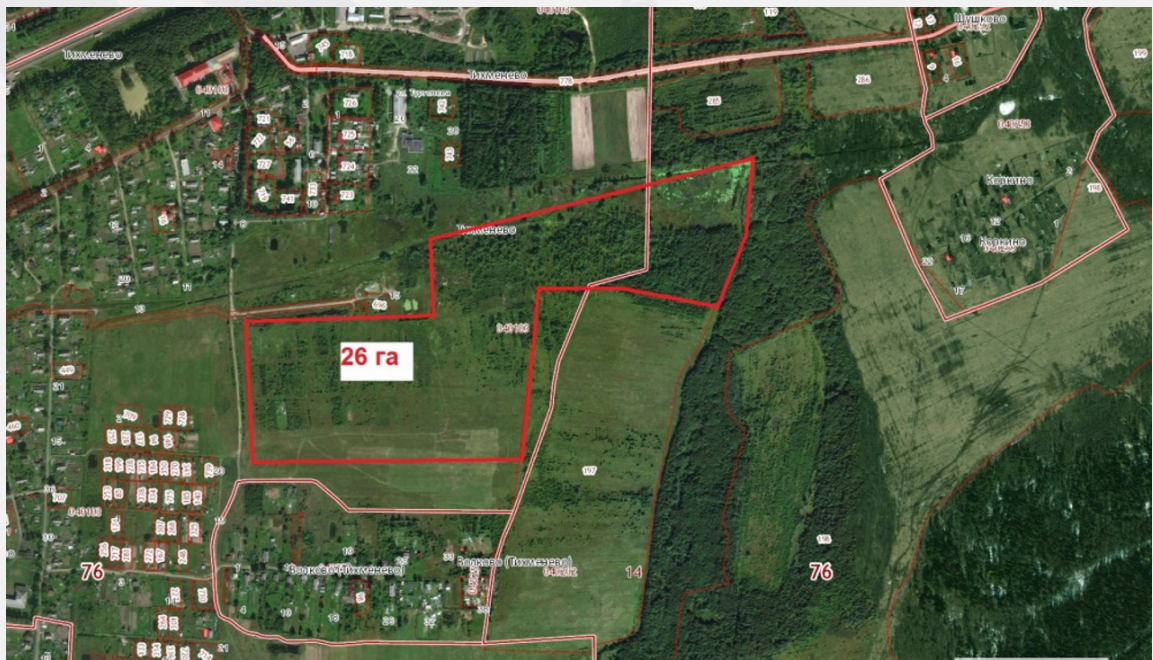
Type of site: Greenfield

The format of the site: Land plot

Land category: Lands of settlements

Form of ownership: municipal

The form of the transaction: rent, sale



Infrastructure

Drainage: It is possible to connect

Gas supply Availability: It is possible to connect

Electricity Availability: It is possible to connect

Heat supply Availability: It is possible to connect

Railway availability: Yes

Additional information

Support measures: [View](#)

Set of investment rules: [View](#)

Tariffs: [View](#)

Name of the owner: Administration of the Rybinsk municipal district

Administrator of the investment platform: Administration of the Rybinsk municipal district

Contact the facility administrator

Contact person

Stepina Victoria Vladimirovna, Deputy Head of the Revenue and Economic Development Department of the Department of Economics and Finance of the Rybinsk Municipal District Administration

Contact person's phone number, e-mail

+7 (4855) 22-26-24