



Министерство  
инвестиций  
и промышленности  
Ярославской области

# Sysoevski Industrial Area, 40

## General

**Total area:** 283785

---

**Type of site:** Greenfield

---

**The format of the site:** Land area

---

**Land category:** Human settlements

---

**Municipal formation:** oh. Fishing

---

**Address (location):** in the city district of Rybinsk, Yaroslav province,  
Sysoev, 40

---

**Form of ownership:** unlimited

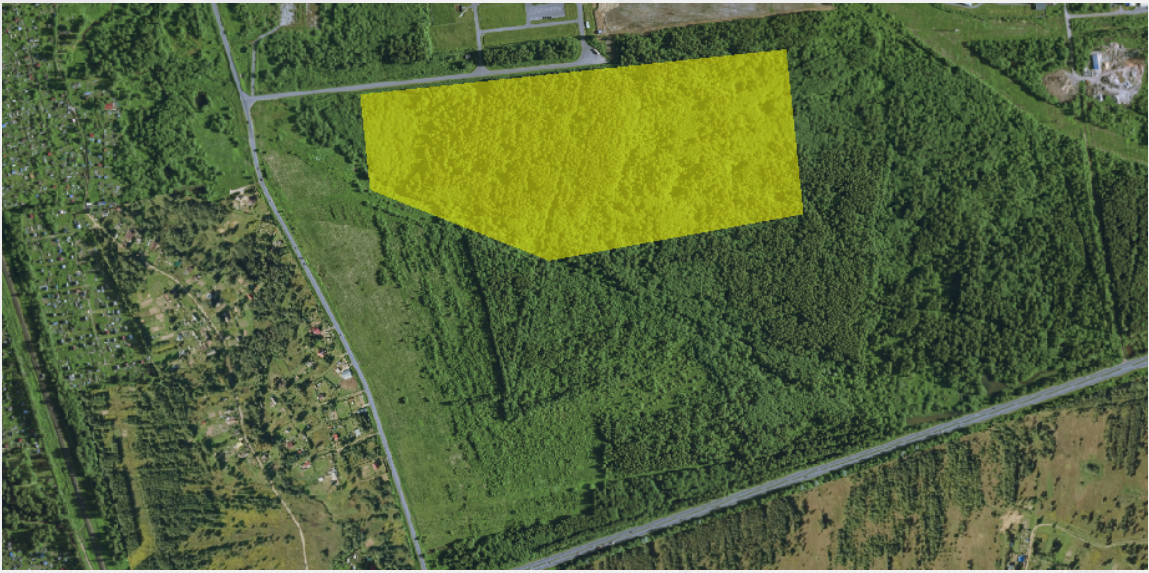
---

**The form of the transaction:** auction lease

---

**The cost of the object, RUB.:** 40 297 470,00 ₪

---



## Description

Type of permitted use: heavy industry

---

# Infrastructure

**Water supply:** Yeah

---

**Consumption tariff (water supply), RUB/cubic meter:** In accordance with established water tariffs

---

**Drainage:** Yeah

---

**Consumption tariff (wastewater disposal), RUB/cubic meter), RUB/ton:** In accordance with established water tariffs

---

**Transportation tariff (drainage), RUB/cubic meter:** In accordance with established water tariffs

---

**Gas supply Availability:** No

---

**Electricity Availability:** No

---

**The average energy price for the reporting year (1 CC, up to 670 kW, RUB./MWh, legal entities):** No data P

---

**Heat supply Availability:** No

---

**Heat supply Consumption rate, RUB/Gcal\*h:** In accordance with established heat supply tariffs

---

**Export of MSW:** Yeah

---

**Export of MSW (tariff), RUB/cubic meter:** In accordance with established tariffs for the export of TCOs

---

**Access roads:** Yeah

---

**Railway availability:** No

---

**Availability of truck parking, yes/no:** No

---

## Additional information

**Administrator of the investment platform:** Department of Property and Land Relations of the Urban District Administration, Rybinsk City, 152934, Rabinsk, Krestovaya, D.77

---

## Contact the facility administrator

### Contact person

Serov Irina Sergeevna, Chief of the Privatization and Control Division of the Urban District Administration, Rybinsk City

### Contact person's phone number, e-mail

+ (4855) 20-44-74 ext. 212

### Website

[View](#)