



Министерство
инвестиций
и промышленности
Ярославской области

Investment site 75.2 ha

General

Total area: 75,2 ga

Type of site: Greenfield

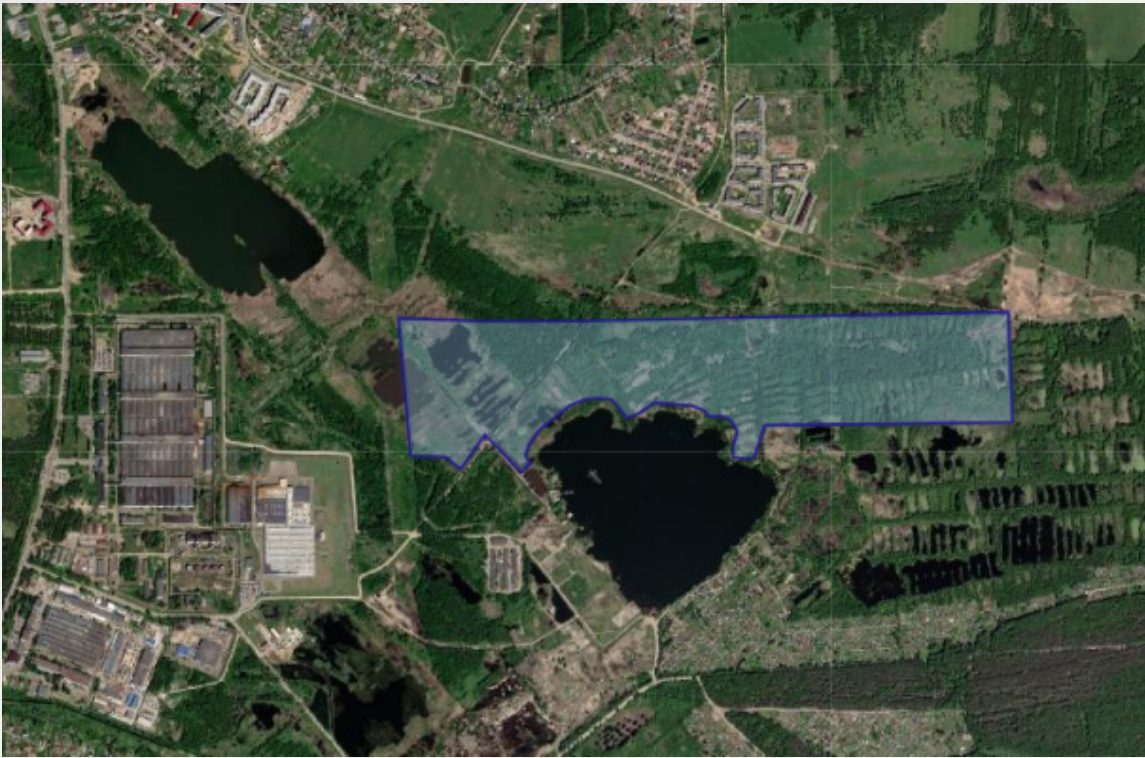
The format of the site: Land plot

Land category: Agricultural land

Municipal formation: Yaroslavsky district

Address (location): Yaroslavl region, Yaroslavsky district, Zavolzhskoye rural settlement, in the area of Ermolovo

Form of ownership: municipal



Description

Type of permitted use: -

General description:

Investment site 75.2 ha

- [The test file is word](#)
 - [Test file - pdf](#)
 - [Excel test file](#)
-

Infrastructure

Infrastructure: Transport accessibility: access to this site is carried out by a spontaneously rolled road. There is an opportunity (corridor) for the construction of a road that provides unhindered access to the land plot. Water supply: the water supply networks are approximately 1 m away. Drainage: sewerage networks (private network) are approximately 1 km away. Power supply: the electrical networks are located in the immediate vicinity of the land plot. Gas: gas networks in Ermolovo village, work is underway to obtain technical specifications for gas supply

Water supply: Yes

Consumption tariff (water supply), RUB/cubic meter: 37,25

Drainage: Yes

Gas supply Availability: Yes

Electricity Availability: Yes

Additional information

Support measures: [View](#)

Set of investment rules: [View](#)

Tariffs: [View](#)

Name of the owner: Administration of the Yaroslavl municipal district

Administrator of the investment platform: Administration of the Yaroslavl municipal district

Contact the facility administrator

Contact person

Panfilova Anastasia Pavlovna, Consultant of the Department of Socio-Economic Development of the Department of Finance and Finance of the NMR Administration

Contact person's phone number, e-mail

+7 (4852) 73-74-89, economica@yamo.adm.yar.ru