



Министерство  
инвестиций  
и промышленности  
Ярославской области

## Investment site 0.47 ha

### General

**Total area:** 4760 sq.m.

---

**Type of site:** Greenfield

---

**The format of the site:** Land plot

---

**Land category:** Lands of settlements

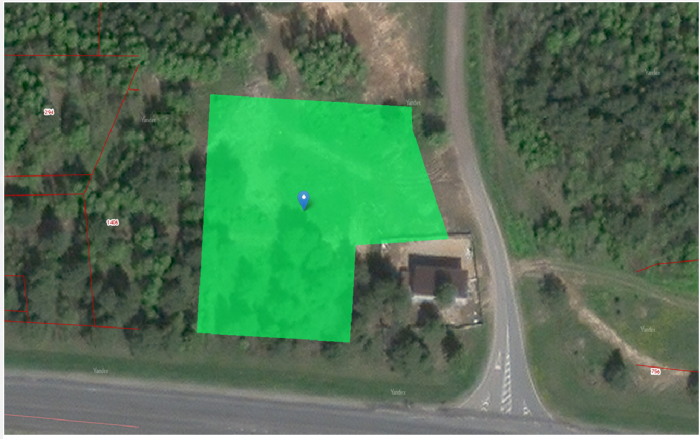
---

**Municipal formation:** Yaroslavsky district

---

**Form of ownership:** municipal

---



## Infrastructure

**Infrastructure:** Transport accessibility: Federal highway "Access to Kostroma from M-8 "Kholmogory". Water supply: not available. Drainage: none. Power supply: there is a technical possibility. Gas: high-pressure gas pipeline "S.Tunoshna - D. Vorobino" distance 100m

---

## Additional information

**Support measures:** [View](#)

---

**Set of investment rules:** [View](#)

---

**Tariffs:** [View](#)

---

**Name of the owner:** Administration of the Yaroslavl municipal district

---

**Administrator of the investment platform:** Administration of the Yaroslavl municipal district

---

## Contact the facility administrator

### Contact person

Panfilova Anastasia Pavlovna, Consultant of the Department of Socio-Economic Development of the Department of Finance and Finance of the NMR Administration

### Contact person's phone number, e-mail

+7 (4852) 73-74-89, [economica@yamo.adm.yar.ru](mailto:economica@yamo.adm.yar.ru)